



BUSINESS TOOLKIT

Welcome to East Bay Community Energy

Clean Energy • Low Rates • Community Benefits





East Bay Community Energy (EBCE) generates and buys clean electricity at low rates for our customers

Before EBCE, PG&E was responsible for your electricity generation. Now, EBCE handles your generation (replacing the PG&E generation charge) while PG&E continues to deliver that energy and send you the bill.

As an EBCE business customer, there are three key benefits you may take advantage of:

1. Cost savings

East Bay Community Energy provides clean energy at low rates. Our Bright Choice option is priced at 3% below PG&E's generation rate. Since serving our first customers in June of 2018, we have maintained a rate that is below PG&E's. The 3% discount will create about \$19 million in annual savings relative to PG&E rates.

2. Energy choice and access

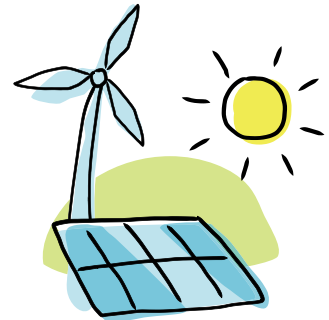
As a not-for-profit public agency, EBCE is accountable to its community and customers, not shareholders. Governed by local elected officials, with decisions and policies made at public meetings, you are now able and encouraged to have your voice heard.

Whether it's the type of energy we are buying, the cost to the customer, energy options offered, program development, and everything in between, our community is helping make those choices. Welcome to the table.

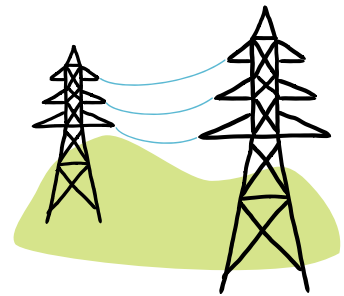
3. Additional programs

EBCE is powering the transition to a cleaner tomorrow, and can help you save money while reducing emissions. EBCE business customers are transitioning from gas to electric vehicles, shifting energy use to when it is cleanest and cheapest, and reducing use through efficiency measures.

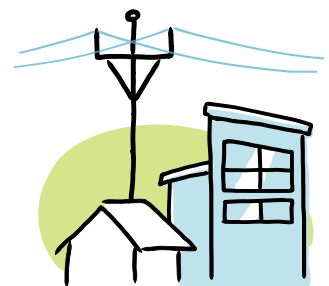
While these are often wise investments on their own, EBCE is here to sweeten the deal. In addition to programs offered by PG&E, EBCE customers can take advantage of our added incentives. For current offerings, check out ebce.org.



EBCE BUYS CLEAN ELECTRICITY



PG&E DELIVERS THE ELECTRICITY



YOU GET THE ELECTRICITY AND ALL THE BENEFITS

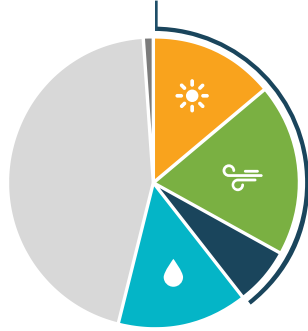
Your energy options

As an EBCE customer, you get to choose your energy product and change your service option at any time. Visit ebce.org or call 1-833-699-EBCE (3223) to review and choose from available products. Additionally, you have the option to opt out and return to PG&E's generation service.

2021 BRIGHT CHOICE POWER CONTENT

Our basic service, which contained 42.3% eligible renewable energy at a 3% discount to PG&E's rate. Default enrollment for most customers.

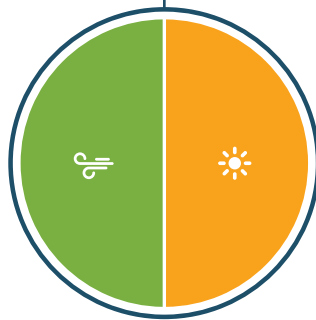
42.3% ELIGIBLE RENEWABLE POWER



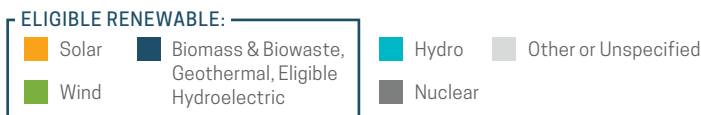
2021 RENEWABLE 100 POWER CONTENT

100% renewable CA solar and wind power at slightly higher rates. (3/4¢/kWh more than PG&E's standard rate.)

100% RENEWABLE



Additional details available at ebce.org/our-power-mix.



Billing and energy rate schedules

EBCE works in collaboration with PG&E to ensure a smooth customer experience. EBCE customers still receive just one bill from PG&E as they did before, with PG&E's generation charges replaced by EBCE's. More information on the updated bill presentment can be found at ebce.org/understand-your-bill.

Additionally, EBCE's rate schedules mirror PG&E's so that you may continue to shift your energy use to off-peak hours and maximize savings. In March 2021, businesses were switched to the new Time of Use rate periods (B rates). The chart to the right illustrates these new time periods. Check out EBCE's additional resources on rate schedules in order to make the best financial decision for your business, using energy when it is cleanest and cheapest. More info at ebce.org/rates.

Default service options

CITY	DEFAULT SERVICE
Albany, Hayward, and Pleasanton	Renewable 100
All other participating cities	Bright Choice
October 2022 transition: Berkeley, Dublin, Emeryville, and San Leandro	Renewable 100

ENERGY SOURCING

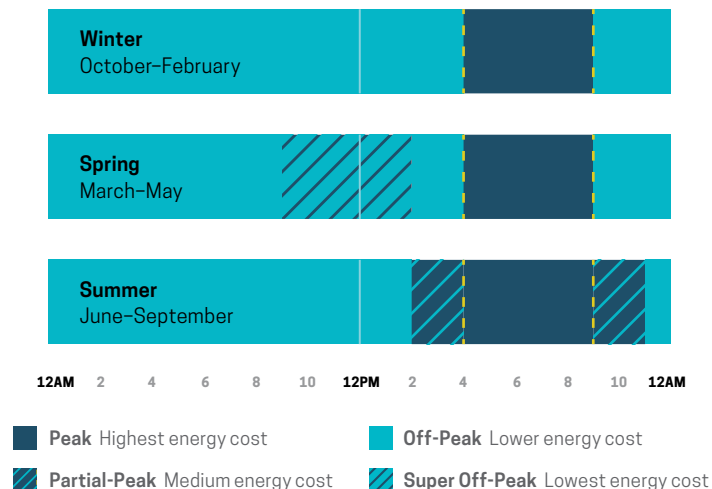
EBCE's goal is to buy power from renewable energy facilities in California, and we are already on our way.

In 2020, EBCE brought two new projects online to service our customers, including the Scott Haggerty Wind Energy Center in Livermore and the Rosamond Solar Project in Kern County. These contracts add renewable energy to California's grid and lower costs for our customers.

700MW
FROM WIND & SOLAR
of contracted or recently built clean energy for East Bay residents and businesses

270MW
OF BATTERY STORAGE
contracted by EBCE to ensure the East Bay power grid is stable

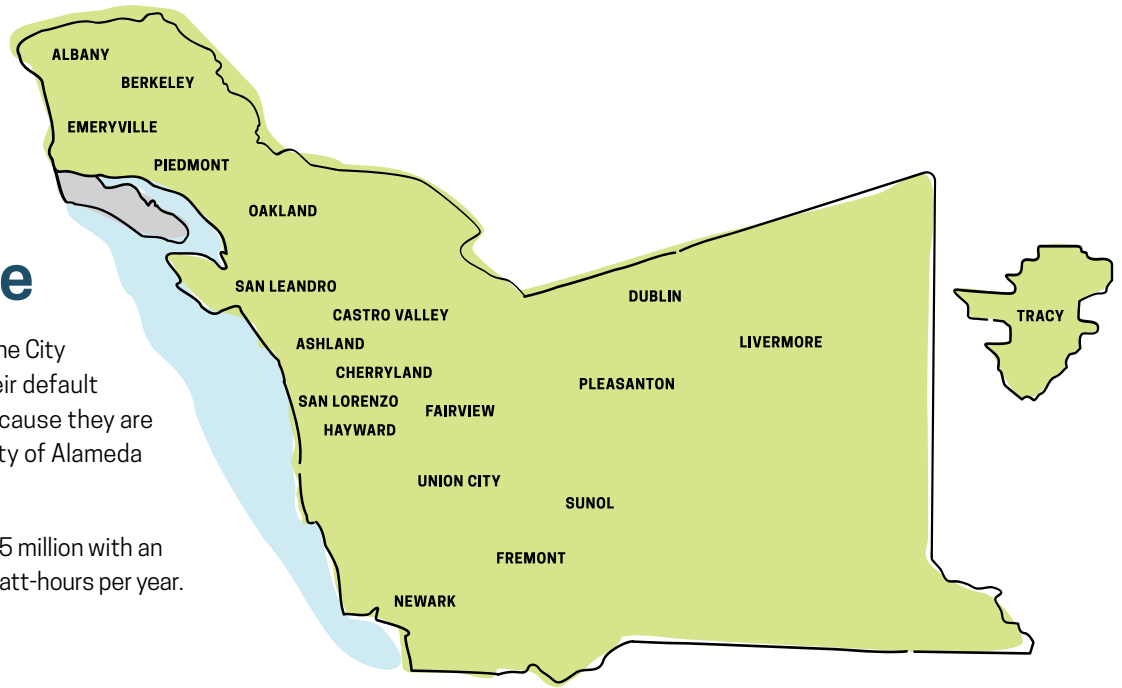
BUSINESS TIME OF USE RATE PERIODS (B-RATES)



Who we serve

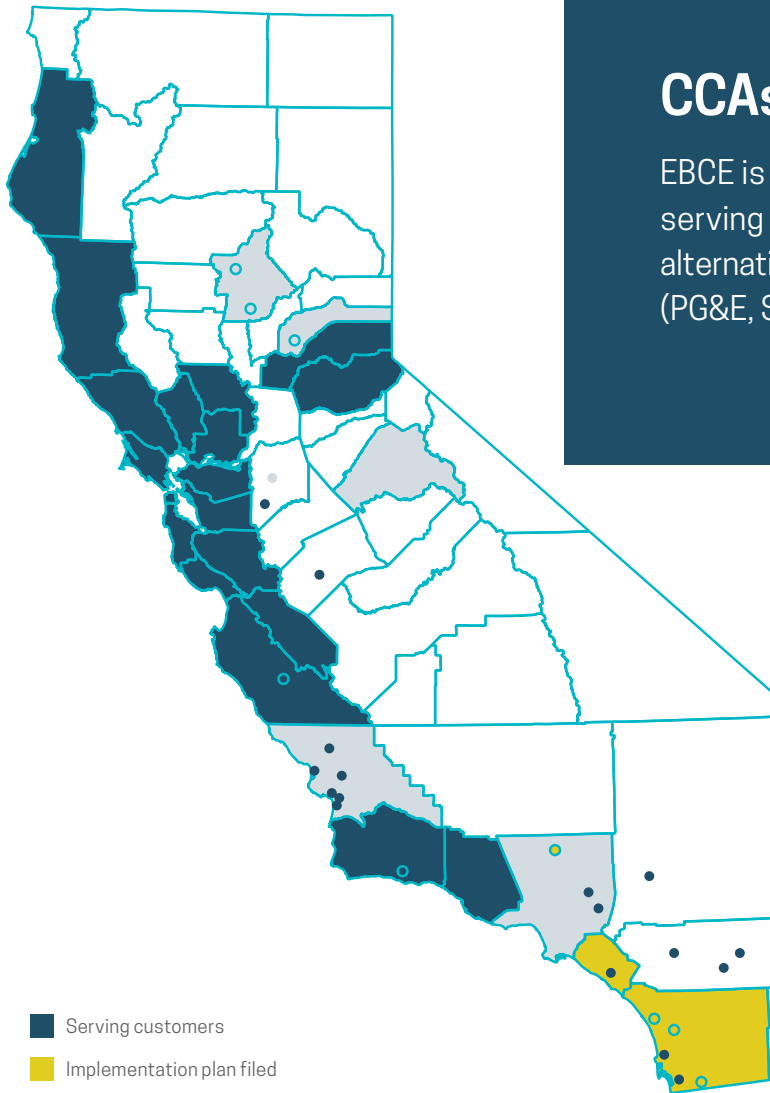
All of eligible Alameda County, plus the City of Tracy, have selected EBCE as their default electricity generation provider. (Because they are served by a municipal utility, the City of Alameda does not participate in EBCE.)

EBCE serves a population of over 1.5 million with an electric load over 6,500,000 Megawatt-hours per year.



CCAs: Proven across California

EBCE is one of 24 Community Choice Agencies serving over 200 cities in California offering an alternative to the applicable Investor Owned Utilities (PG&E, Southern California Edison, and San Diego)



- Serving customers
- Implementation plan filed
- Considering CCA

Over 10,000MW

of new clean generation capacity contracted through long-term Power Purchase Agreements by CCAs across California

+40%

Load % in PG&E's service area that CCAs served in 2022

~10%

Load % in PG&E's service area that EBCE served in 2022

Businesses have choices about their electric supply

EBCE is committed to offering options to create the right value proposition for businesses that prioritize savings or lowering your carbon footprint. Businesses in the East Bay can choose between EBCE's Renewable 100, EBCE's Bright Choice, or they can return to PG&E for generation service. Either way, EBCE has you covered.



Buying green power provides businesses a variety of environmental, economic, and stakeholder-relations benefits.

Zero carbon footprints

Renewable 100 is sourced from 100% California wind and solar power, as verified by the California Energy Commission. Customers of Renewable 100 can zero-out their greenhouse gas footprint for electricity supply.

Participation in the green economy

Green power purchases support the development of local renewable energy projects, which creates jobs, promotes resource diversity, and provides grid resilience.

Happy customers and employees

Customers, especially in the Bay Area, increasingly want to patronize businesses that are doing their part for the environment. Leadership on renewable energy can improve employee morale, productivity, retention, and hiring. Studies show that people prefer to work for organizations with an environmentally-friendly reputation.

If you are interested in powering your business with 100% renewable energy, let us know! EBCE is happy to provide an estimate of the additional cost of Renewable 100 for your business. For more information, please email EBCE's Account Services Business Associate, David Lewbin, at dlewbin@ebce.org.

Compare your options

	Renewable 100	Bright Choice	PG&E
GENERATION RATE (PER KWH)	\$0.131	\$0.119	\$0.121
ENERGY PROGRAMS/ INCENTIVES OFFERED	EBCE and PG&E	EBCE and PG&E	PG&E only

GETTING THE MOST FROM RENEWABLE 100

- **Get LEED points from US Green Building Council**
LEED is the leading green building certification program, and buying Renewable 100 can earn points toward certification.
- **Join the California Green Business Network**
Your business can become a Certified Green Business, and buying Renewable 100 demonstrates your commitment.
- **Join the EPA Green Power Partnership**
This is a free, national recognition program.



Habitat for Humanity is honored to partner with East Bay Community Energy. From their support of affordable housing to promoting women in leadership, EBCE cares about the communities and people they serve.”

—Habitat for Humanity East Bay/Silicon Valley



We're thrilled to use renewable energy from EBCE to power our family owned restaurant! EBCE allows us to lower our carbon footprint while increasing our sense of community through community choice aggregation, and creative promotional campaigns that propel our brand forward.”

—Joel DiGiorgio, Arthur Mac's Tap & Snack



During this time of uncertainty, East Bay Community Energy has been a champion for the vulnerable patients and families that need us most.”

—UCSF Benioff Children's Hospitals



EBCE, the City of Fremont, and many others are working together to create a healthy, safe, and vibrant future for our community. Reach out to EBCE to hear about what is in the works and to make sure your business goals are aligned with your energy choices.”

—Rachel DiFranco, Sustainability Manager, City of Fremont



Next steps

Now that you better understand EBCE and how our service affects your business, take some action!

- ✔ **Check out the programs EBCE has to offer.** Could you be reducing costs and helping the planet in the process? Learn more at ebce.org/business.
- ✔ **Understand your energy bill.** Learn how to calculate your energy savings from your energy bill. Visit us online at ebce.org/understand-your-bill.
- ✔ **Do you have questions about EBCE?** See answers to our Frequently Asked Questions at ebce.org/faq.
- ✔ **Want to change your default plan?** Make changes to your plan online at ebce.org/change-my-plan.

For detailed usage requests, please email us at:

accountservices@ebce.org

Get the latest in your inbox:

Sign up for categorized email updates towards the bottom of our homepage at ebce.org.



Contact us

1-833-699-EBCE (3223)
customer-support@ebce.org

Visit and follow us

ebce.org
@PoweredbyEBCE

Languages

Español ebce.org/es
中文 ebce.org/cn